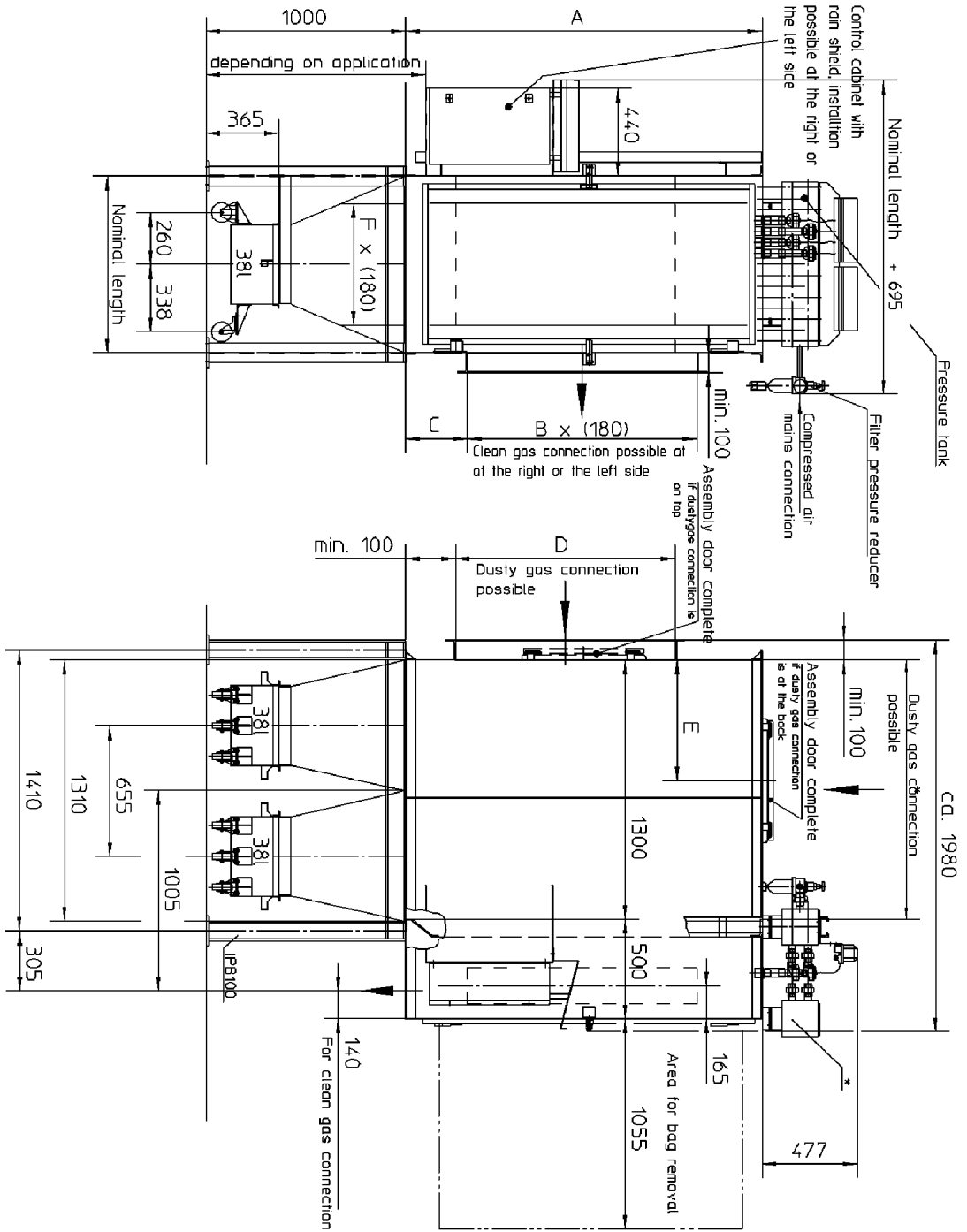


Dimension sheet for filter

FD 313, FD 413, FD 513



- * - The dusty gas connection is not drilled according to works standard but according to hole pattern on the corresponding drawing.
- If the dusty gas connection is on top the pressure tank is mounted at the face on the assembly door is installed in the back.
- For size and arrangement of the pressure tank see drawing.

Dusty gas connection on top - dimensions
 FD313 - 1300x611
 FD413 - 1300x886
 FD513 - 1300x1161

Dimension sheet for filter

FD 313, FD 413, FD 513

Type	Nominal length mm	A	Clean gas connection B	C	Dusty gas connection D	E	Clean gas connection F	Filter surface m ²	Approx. weight	Average compressed air consumption Nm ³ /h
FD 313 0,6/ 18	611	1404	550	415	800 (x611)	405	611	18	1000 kg	8,29
FD 313 0,6/ 21								21		9,17
FD 313 0,6/ 24								24		9,95
FD 313 0,6/ 27								27		10,66
FD 313 0,6/ 30								30		11,31
FD 413 0,8/ 32	886	1785	1150	310	110 (x886)	650	886	32	1200 kg	9,95
FD 413 0,8/ 36								36		10,66
FD 413 0,8/ 40								40		11,31
FD 413 0,8/ 44								44		11,90
FD413 0,8/ 48								48		12,45
FD 413 0,8/ 52								52		12,94
FD 413 0,8/ 56								56		13,40
FD 413 0,8/ 60								60		13,83
FD 513 1,1/ 65	1161	2170	1900	135	1300 (x1161)	650	1161	65	1600 kg	16,13
FD 513 1,1/ 70								70		16,71
FD 513 1,1/ 75								75		17,24
FD 513 1,1/ 80								80		17,73
FD 513 1,1/ 85								85		18,19
FD 513 1,1/ 90								90		18,62
FD 513 1,1/ 95								95		19,02
FD 513 1,1/ 100								100		19,40

Filterhousing made of 3mm sheet metal

Ambient air, not under pressure

- Quantity of bags if fully equipped
- Filter size
- Length of the filter bags: 13 = 1,3m
- Quantity of superimposed filter ranges
- Cleaning method: S = compressed air
- Product name: F = cassette-type filter

- 200 ms pulse duration, 10 s pulse train, 2 min. pause after one passage.
- Sound pressure level: 80 dB(A) in 1 m.
- The diameter of the compressed air pipe is depending on the application. The piping is to be done by the customer: up 10m distance to compressed air system dia min. 1/2 inch, other cases to be terminated
- Pressure min 6,5 bar.
- **Compressed air connection: 1/2 inch**